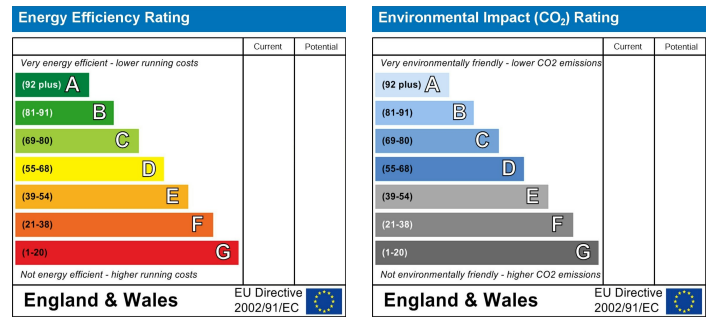


Location

Location Map



EPC Graph



Important Note

Centro Residential Sales and Lettings limited have not tested any services, heating system, electrical system, appliances, fixtures and fittings, that may be included in this property and would advise interested parties to satisfy themselves as to their condition or investigating the presence of any deleterious materials.

Viewing: Strictly by appointment through:

CENTRO RESIDENTIAL SALES AND LETTINGS LIMITED

Tel: 020 8401 5000

E-mail: residential@centro.plc.uk

See a selection of our properties at www.centro.plc.uk

16

£2,250 Per Month - 16th March 2026

, Sutton, SM3 8SR



Description

- 4 Bedrooms
- Split Level
- Spacious Lounge
- Modern Kitchen
- Balcony
- 2 Parking Permits
- Cheam Village
- Unfurnished
- EPC Rating E
- Council Tax Band D

Features

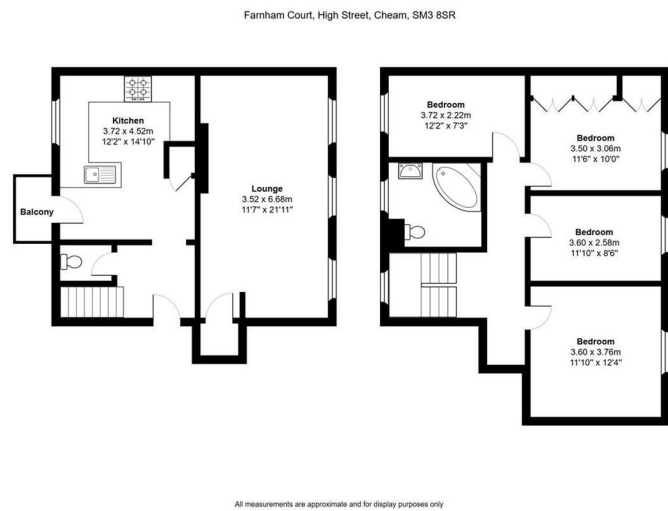
- Gas Central Heating
- Double Glazing
- Laminate Flooring

What you need to know

- Term: 12 months
- Rent: £2250pcm exclusive of bills
- Security deposit: £2596.00
- Council Tax Band D
- Energy Rating: E



Floor Plan



For illustration purposes only



All dimensions and measurements are approximate and for guidance only.

Just Centro's Opinion...

Ideally located in the heart of Cheam Village, this spacious split-level apartment is well suited to family living. The generous lounge provides ample space for relaxing and dining, while the open-plan fitted kitchen features a dedicated dining area, creating a practical and sociable family space. A small private balcony offers useful outdoor space.

The upper level comprises four well-proportioned double bedrooms, a stylish family bathroom with jacuzzi bath and shower. Further benefits include downstairs W.C, excellent storage, communal gardens, and two parking permits.

Situated close to Cheam Railway Station, local bus routes, schools, and a wide range of shops and amenities, this unfurnished property is available in March and offers a great opportunity for families looking to settle in a popular village location.

Additional Photos

